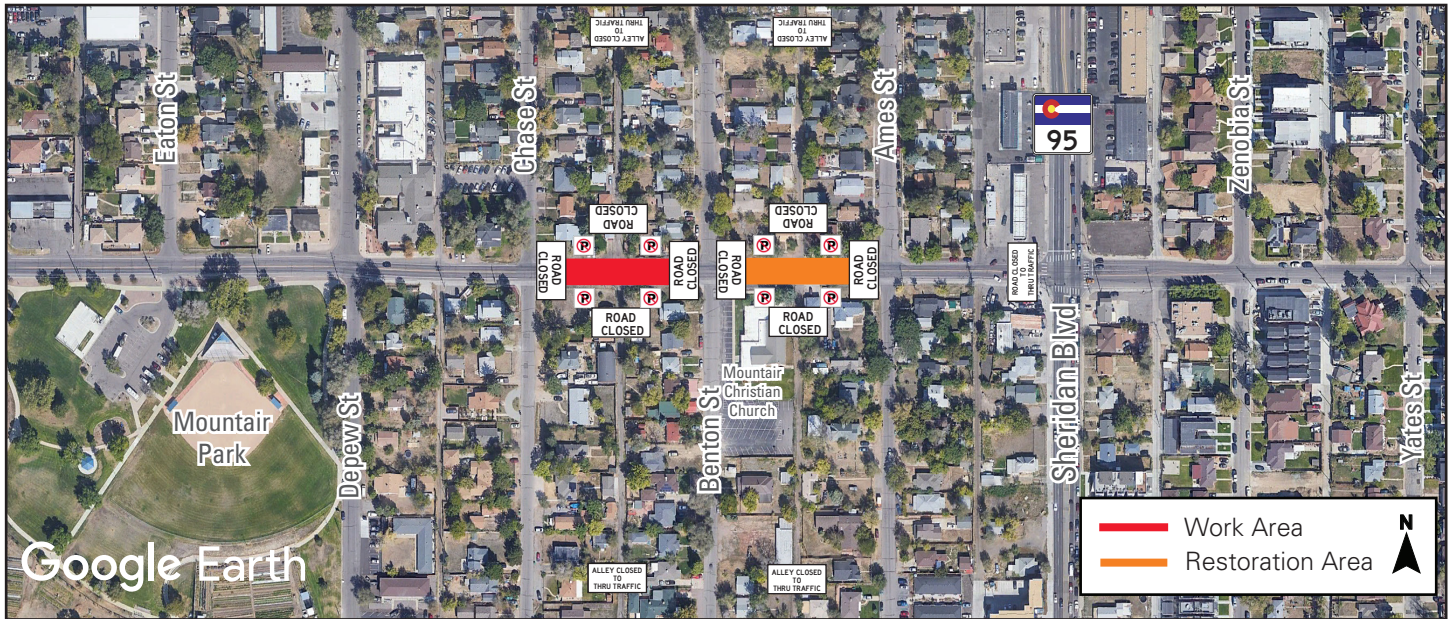


## ROAD CLOSURE NEAR YOU



This map is a graphic and may not show exact locations.

### Work in your area

**We will install natural gas line on 14th Avenue, between Benton and Chase streets, and restore work areas between Ames and Benton streets, beginning as early as Monday, Feb. 13, 2023.** A full road closure will be in place 24 hours a day, seven days a week as we work in these areas. The full road closure will continue for up to two weeks. Detours will be in place along Sheridan Boulevard and Harlan Street and along Colfax and 10th avenues.

Please obey parking restrictions. Schedules are subject to change.

During work, you may notice:

- Marking of utility lines and utility survey holes
- Road and sidewalk closures
- Traffic control
- Temporary changes to access
- Construction noise
- Parking restrictions

We'll restore work areas to preconstruction conditions as weather allows.

Thank you for your patience as we construct this important project.

### Why?

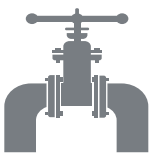
We are revitalizing a portion of our natural gas system serving the west Denver metro area by installing natural gas line and constructing two natural gas regulator stations in Lakewood and Denver.

This work allows us to provide safe, reliable service, increases natural gas capacity in many metro area communities and enhances system resiliency in extreme weather.

### Safety

Public safety is at the foundation of all we do. The safety of the public around Xcel Energy's natural gas system influences every decision we make.

If you suspect a natural gas leak, leave your home or business immediately. Once you are safely away, call **911**, then Xcel Energy at **800-895-2999**.



### Contact Us

303-291-6298

[XcelEnergyWestMetroProject.com](https://XcelEnergyWestMetroProject.com)

[Info@XcelEnergyWestMetroProject.com](mailto:Info@XcelEnergyWestMetroProject.com)